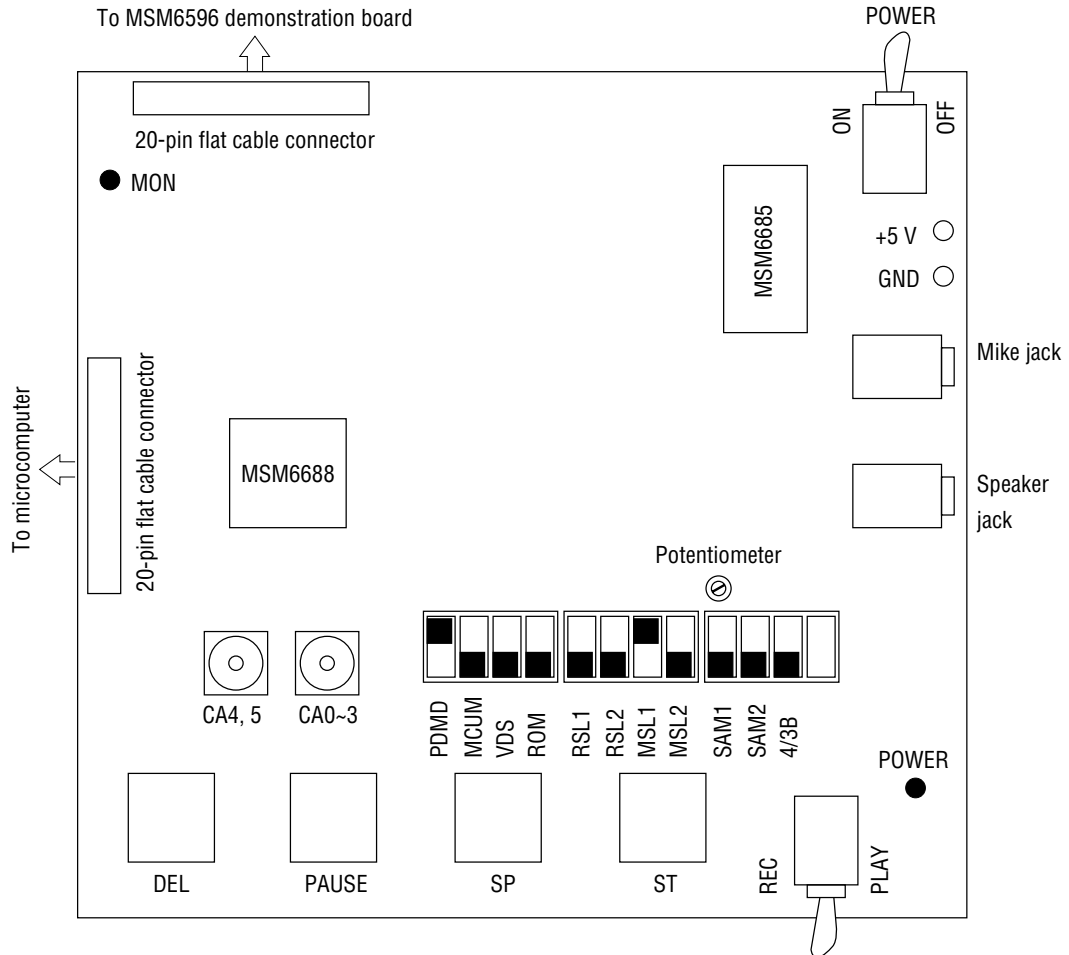


MSM6688 DEMO BOARD**MSM6688 Demonstration Board****BOARD DESIGN****CONDITION SETTING**

Two HEX switches and three DIP switches are used to set recording conditions.

- Normally, turn on dip switch PDMD.
OFF: The device is automatically turned off except for recording and playback.
ON: The device is not turned off and is on standby except for recording and playback.
- Turn off dip switch MCUM.
OFF: Sets up the stand-alone mode.
ON: Sets up the microcomputer interface mode. (Note)

Note: The microcomputer interface mode cannot be set up merely by turning on dip switch MCUM. Refer to the section of "WHEN USING IN MICROCOMPUTER INTERFACE MODE" when using this demonstration board in microcomputer interface mode.

3. Use dip switch VDS to specify whether to initiate with voice.
 OFF: Normal mode where recording is not initiated with voice
 ON : Voice initiation

Note: Voice initiation requires the use of a regulated power supply instead of a battery. When a battery is used, the voltage variation of several mV during the start of recording is amplified and, thus, results in voice detection.

4. Turn off dip switch ROM.
 OFF: Sets up the recording and playback mode.
 ON : Sets up the ROM playback mode.
5. Use dip switches RSL1 and RSL2 to set the number of serial registers to be connected externally.

RSL2	OFF	OFF	ON	ON
RSL1	OFF	ON	OFF	ON
Number of serial registers	1	2	3	4

6. Turn on dip switch MSL1 and turn off MSL2.
7. Use dip switches SAM1 and SAM2 to select the sampling frequency.

SAM2	SAM1	Sampling frequency
OFF	OFF	$f_{OSC}/1024$ (4.0 kHz)
OFF	ON	$f_{OSC}/768$ (5.3 kHz)
ON	OFF	$f_{OSC}/640$ (6.4 kHz)
ON	ON	$f_{OSC}/512$ (8.0 kHz)

* A value in parentheses is applied when f_{OSC} is 4.096 MHz.

8. Use dip switch 4/3B to select the bit rate.
 OFF: 3-bit ADPCM
 ON : 4-bit ADPCM

9. Use the HEX switch (CA) to select a channel for recording and specify a phrase.

CA4, 5	CA0-3	Phrase number	Remarks
0	0	Ch 00	For deletion of all phrases
0	1	Ch 01	Applicable to recording and playback, and to ROM playback (63 phrases)
:	:	:	
:	:	:	
:	F	Ch 0F	
1	0	Ch 10	
:	:	:	
:	:	:	
:	F	Ch 1F	
2	0	Ch 20	
:	:	:	
:	:	:	
:	F	Ch 2F	
3	0	Ch 30	
:	:	:	
:	:	:	
:	F	Ch 3F	

RECORDING

1. Turn on the power switch. The LED (POWER) on the demonstration board lights.
2. Set HEX switches CA4, 5 and CA0-3 at "00".
3. Press the DEL button to delete all phrases.
4. Set conditions according to the above condition setting.
5. Place the REC/PLAY switch in the REC position to set up the recording mode.
6. Press the ST button to record voice through the mike.
7. Upon the exhaustion of the whole memory capacity, recording is terminated automatically. To suspend recording, press the SP button.

Note: If the whole memory capacity has been used for recording, the other phrases cannot be recorded.

PLAYBACK

1. Place the REC/PLAY switch in the PLAY position to set up the playback mode.
2. Pressing the ST button starts playback. During playback, the LED (MON) is lit.
3. The playback of a whole recording results in automatic termination. To suspend playback, press the SP button.
4. The volume of playback can be adjusted by the potentiometer.

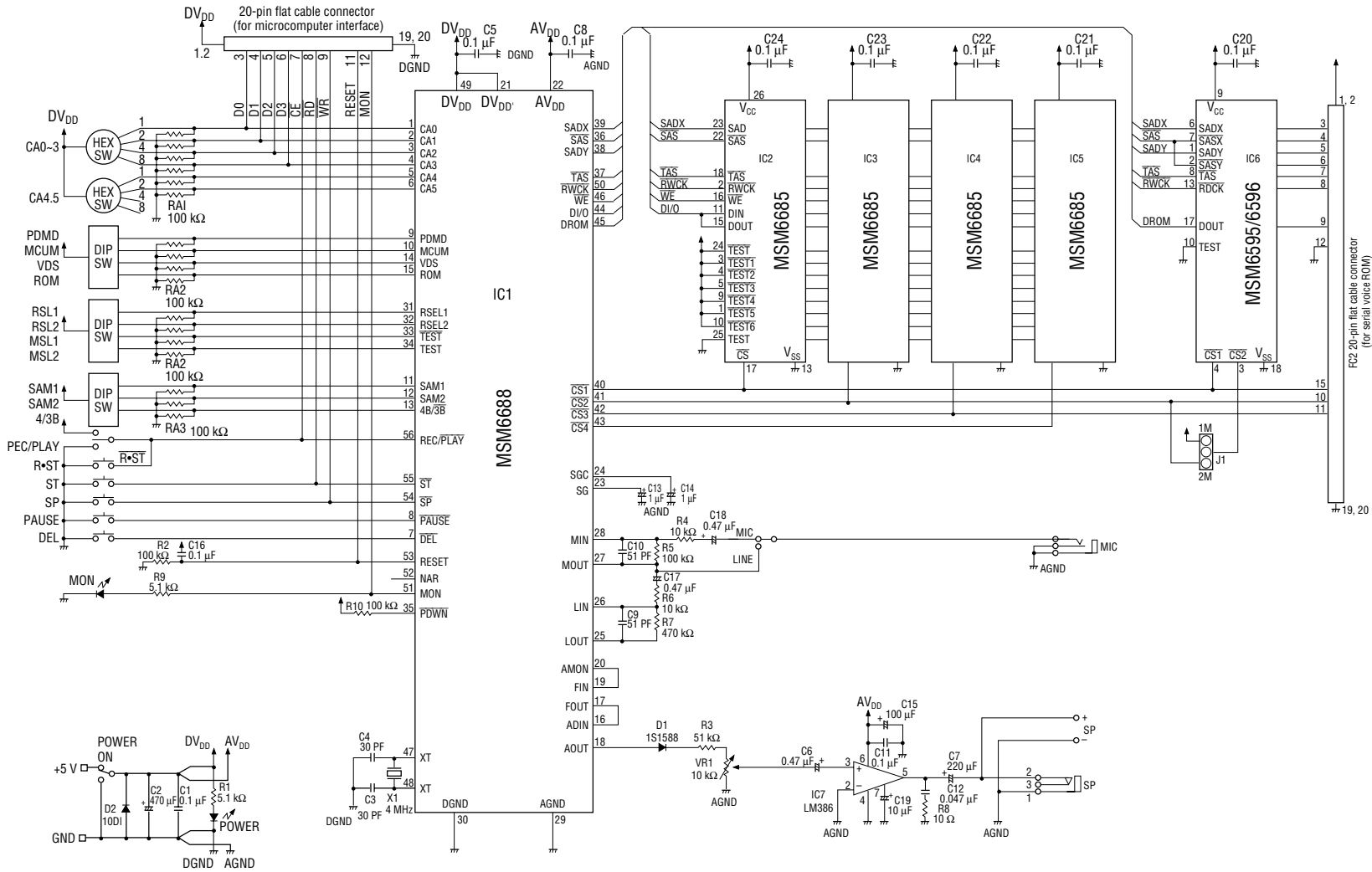
SUSPENDING RECORDING AND PLAYBACK

1. Pressing the PAUSE button during recording or playback causes the recording or playback to be suspended.
2. Pressing the ST button restarts recording and playback.

CIRCUIT DIAGRAM

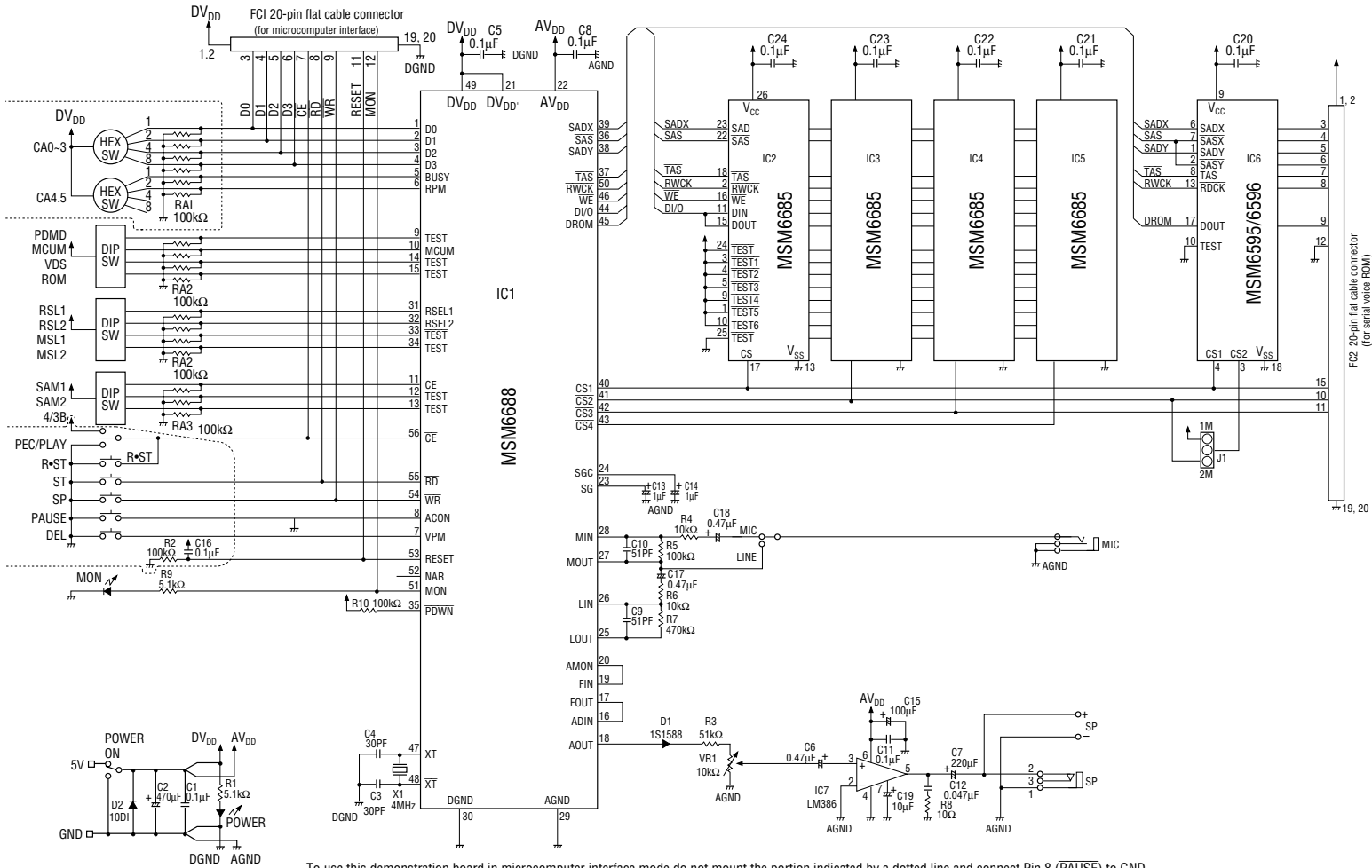
OKI Semiconductor

MSM6688 DEMO BOARD



WHEN USING IN MICROCOMPUTER INTERFACE MODE

How to Change Setting from stand-alone Mode to Microcomputer Interface Mode

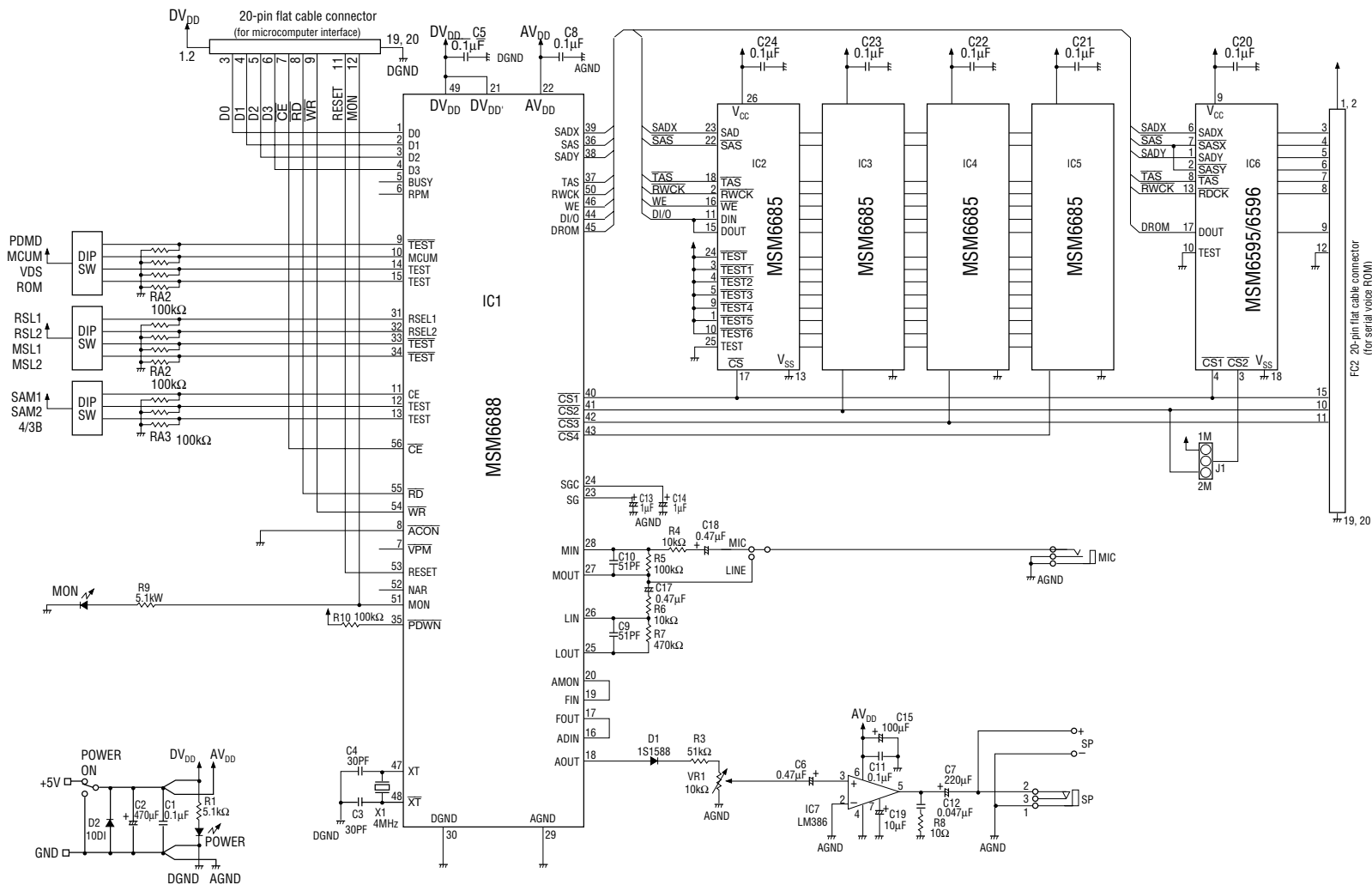


To use this demonstration board in microcomputer interface mode, do not mount the portion indicated by a dotted line and connect Pin 8 (PAUSE) to GND.

Circuit Diagram(Microcomputer Interface Mode)

OKI Semiconductor

MSM6688 DEMO BOARD



SETTING PROCEDURE OF CONDITIONS

Three DIP switches are used to set recording conditions.

Turn on dip switch PDMD.

Turn on dip switch MCUM.

OFF: Sets up the stand-alone mode.

ON: Sets up the microcomputer interface mode.

Turn off dip switch VDS.

Turn off dip switch ROM.

Use dip switches RSL1 and RSL2 to set the number of serial registers to be connected externally.

RSL2	OFF	OFF	ON	ON
RSL1	OFF	ON	OFF	ON
Number of serial registers	1	2	3	4

Turn on dip switch MSL1 and turn off MSL2

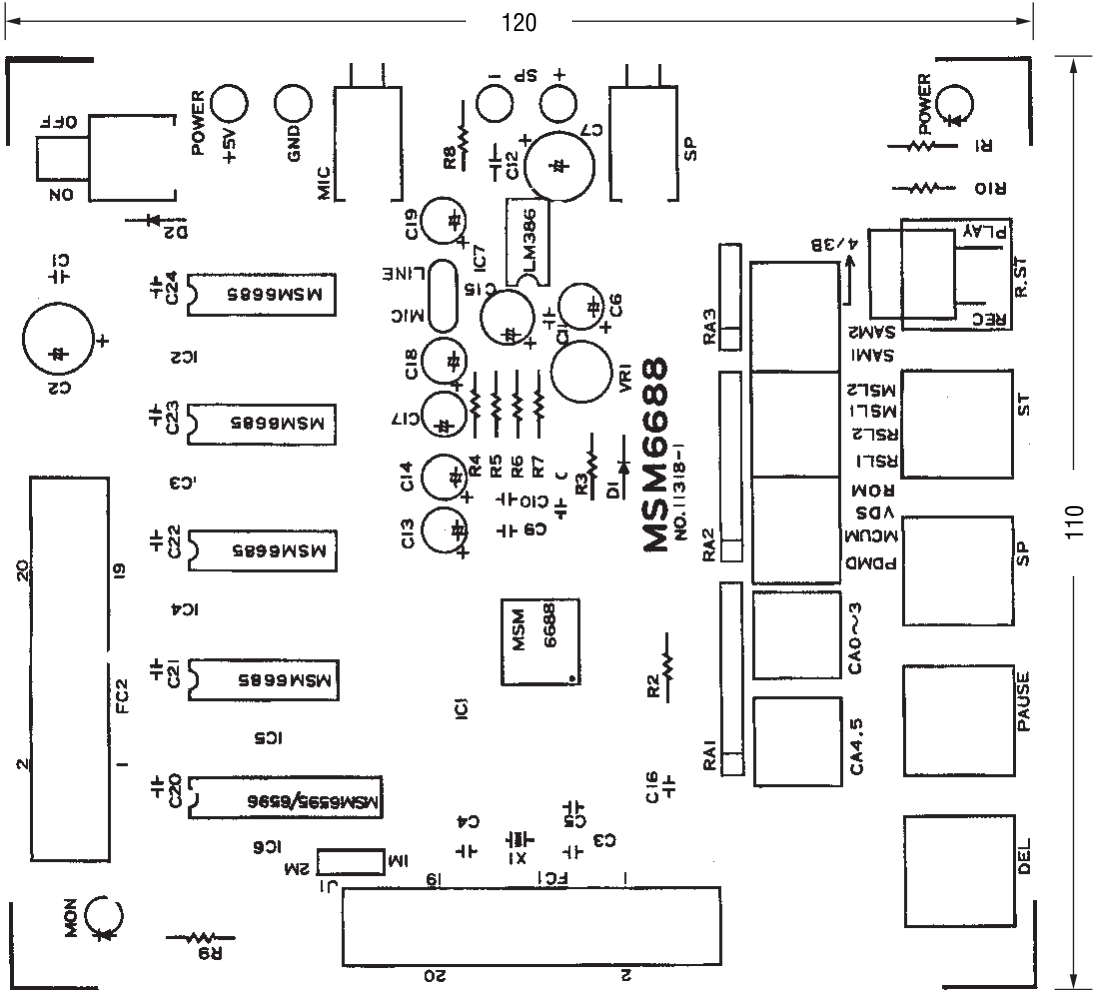
Turn on dip switch SAM1 and turn off dip switch SAM2.

Turn off dip switch 4/3B.

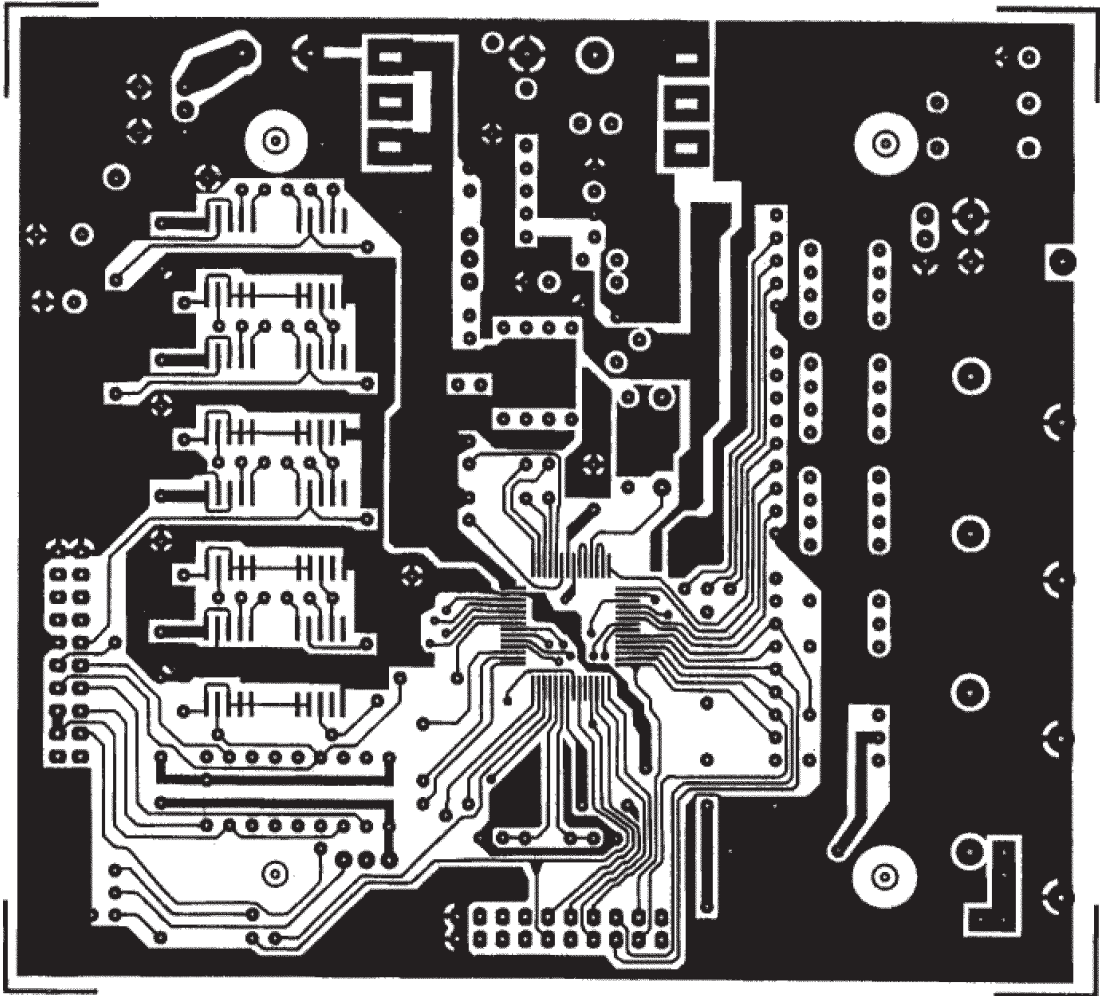
PATTERN LAYOUT

Silk Screen

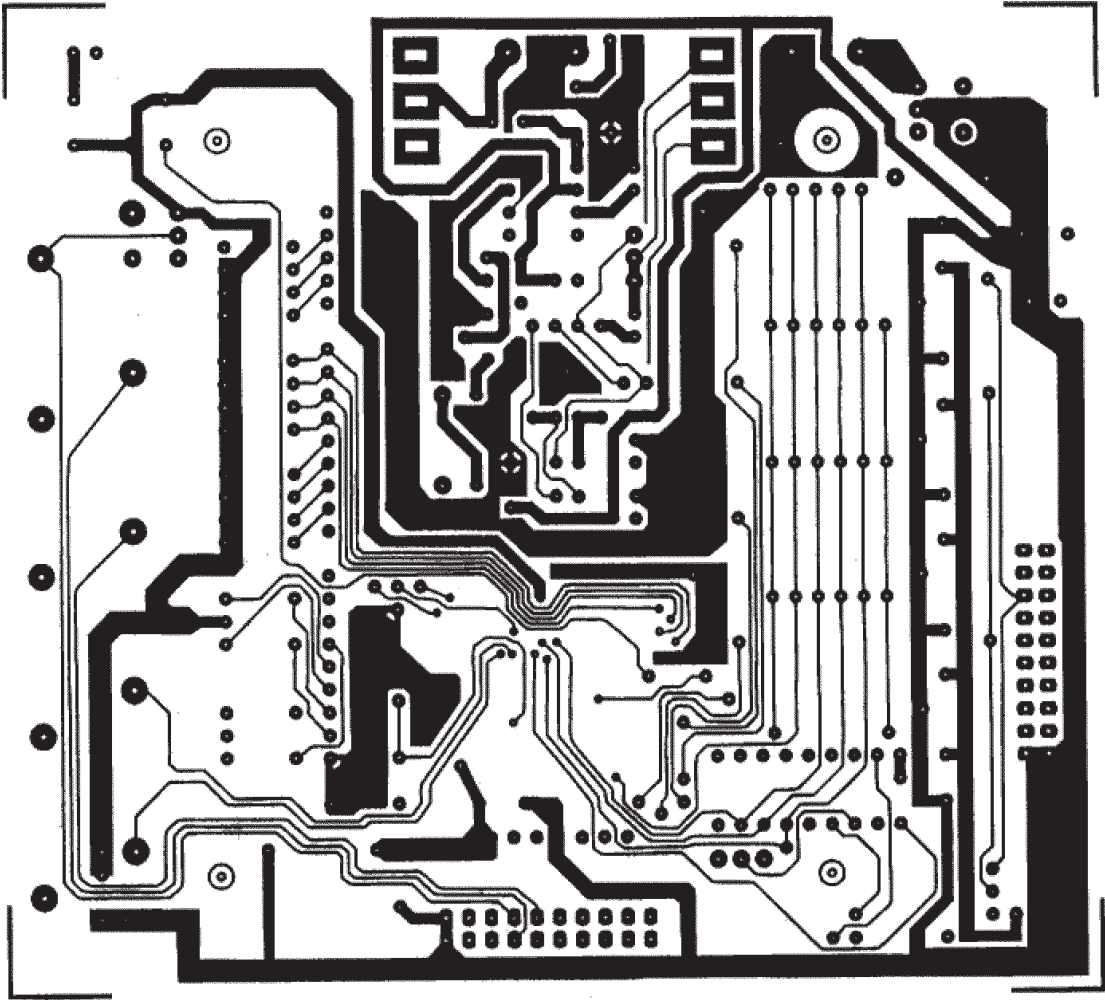
(Unit: mm)



Mounting Side



Solder Side



NOTICE

1. The information contained herein can change without notice owing to product and/or technical improvements. Before using the product, please make sure that the information being referred to is up-to-date.
2. The outline of action and examples for application circuits described herein have been chosen as an explanation for the standard action and performance of the product. When planning to use the product, please ensure that the external conditions are reflected in the actual circuit, assembly, and program designs.
3. When designing your product, please use our product below the specified maximum ratings and within the specified operating ranges including, but not limited to, operating voltage, power dissipation, and operating temperature.
4. Oki assumes no responsibility or liability whatsoever for any failure or unusual or unexpected operation resulting from misuse, neglect, improper installation, repair, alteration or accident, improper handling, or unusual physical or electrical stress including, but not limited to, exposure to parameters beyond the specified maximum ratings or operation outside the specified operating range.
5. Neither indemnity against nor license of a third party's industrial and intellectual property right, etc. is granted by us in connection with the use of the product and/or the information and drawings contained herein. No responsibility is assumed by us for any infringement of a third party's right which may result from the use thereof.
6. The products listed in this document are intended for use in general electronics equipment for commercial applications (e.g., office automation, communication equipment, measurement equipment, consumer electronics, etc.). These products are not authorized for use in any system or application that requires special or enhanced quality and reliability characteristics nor in any system or application where the failure of such system or application may result in the loss or damage of property, or death or injury to humans. Such applications include, but are not limited to, traffic and automotive equipment, safety devices, aerospace equipment, nuclear power control, medical equipment, and life-support systems.
7. Certain products in this document may need government approval before they can be exported to particular countries. The purchaser assumes the responsibility of determining the legality of export of these products and will take appropriate and necessary steps at their own expense for these.
8. No part of the contents contained herein may be reprinted or reproduced without our prior permission.
9. MS-DOS is a registered trademark of Microsoft Corporation.

Copyright 1999 Oki Electric Industry Co., Ltd.
