

B3F

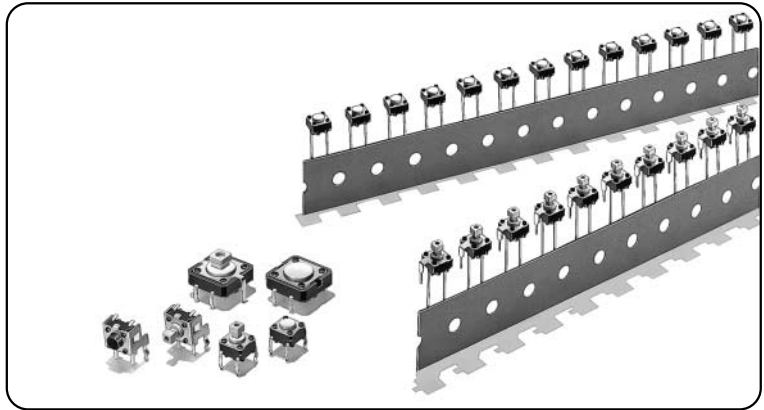
轻触式开关

6mm方形、12mm方形
具有垂直型、高荷重、
镀金型等全系列产品

- 实现轻快的按触感及高耐久性
- 备有可用于通用的径向带状部件插入机的带状规格
- 备有可以在长时间内保持稳定接触和绝缘的镀金型。
- 可安装键顶(B32系列)，有凸型柱塞。

符合RoHS

B
3
F



■ 种类

6mm方形

| 型号 | 柱塞的种类 | 高度 | 动作力 | 接地端子 | |
|------------------------------|---------------------------|--------------------|-------------|----------------|------------|
| | | | | 无 | 有 |
| 发货形态 | | | | 袋装 (100个/袋) | |
| 6mm方形 标准型 (B3F-1000系列) | (平型) | 4.3mm | 0.98N | B3F-1000 | B3F-1100 |
| | | | 1.47N | B3F-1002 | B3F-1102 |
| | | | 2.55N | B3F-1005 | B3F-1105 |
| | | | 4.9N | B3F-1006* | — |
| | | 5.0mm | 0.98N | B3F-1020 | B3F-1120 |
| | | | 1.47N | B3F-1022 | B3F-1122 |
| | | | 2.55N | B3F-1025 | B3F-1125 |
| | | | 4.9N | B3F-1026* | — |
| | | 5.0mm (7.5mm节距) | 0.98N | — | B3F-1110 |
| | | 7.0mm | 0.98N | B3F-1060 | — |
| | 1.47N | | B3F-1062 | — | |
| | 9.5mm | 0.98N | B3F-1070 | — | |
| | | 1.47N | B3F-1072 | — | |
| | (凸型) | 7.3mm | 0.98N | B3F-1050 | B3F-1150 |
| 1.47N | | | B3F-1052 | B3F-1152 | |
| 2.55N | | | B3F-1055 | B3F-1155 | |
| 4.9N | | | B3F-1056* | — | |
| 6mm方形 立式型 (B3F-3000系列) | (平型) | 3.15mm | 0.98N | — | B3F-3100 |
| | | | 1.47N | — | B3F-3102 |
| | | | 2.55N | — | B3F-3105 |
| | | 3.85mm | 0.98N | — | B3F-3120 |
| | 1.47N | | — | B3F-3122 | |
| | 6.15mm | 2.55N | — | B3F-3125 | |
| | | 0.98N | — | B3F-3150 | |
| | (凸型) | 6.15mm | 1.47N | — | B3F-3152 |
| | | | 2.55N | — | B3F-3155 |
| | 6mm方形 镀金型 (B3F-G系列) | (平型) | 4.3mm | 1.76N | B3F-1002-G |
| 5.0mm | | | B3F-1022-G | | B3F-1122-G |
| 7.0mm | | | B3F-1062-G* | | — |
| 9.5mm | | | B3F-1072-G* | | — |
| (凸型) | | 7.3mm | B3F-1052-G* | | — |
| | | (平型) | 3.85mm | | — |

注. 袋装发货数量100个/袋, 定货需100个的整数倍。

12mm方形

| 型号 | 柱塞的种类 | 高度 | 动作力 | 接地端子 | |
|--------------------------------|-------|-------|-------|----------------|----------|
| | | | | 无 | 有 |
| 发货形态 | | | | 袋装 (100个/袋) | |
| 12mm方形 标准型 (B3F-4000系列) | 平型 | 4.3mm | 1.27N | B3F-4000 | B3F-4100 |
| | | | 2.55N | B3F-4005 | B3F-4105 |
| | 凸型 | 7.3mm | 1.27N | B3F-4050 | B3F-4150 |
| | | | 2.55N | B3F-4055 | B3F-4155 |
| 12mm方形 长寿型 (B3F-5000系列) | 平型 | 4.3mm | 1.27N | B3F-5000 | B3F-5100 |
| | 凸型 | 7.3mm | | B3F-5050 | B3F-5150 |
| 12mm方形 高信赖型 (B3F-5001系列) | 平型 | 4.3mm | 1.27N | B3F-5001 | B3F-5101 |
| | 凸型 | 7.3mm | | B3F-5051 | B3F-5151 |

注. 订货需100个的整数倍。

6mm方形柱塞型(袋装规格)

| 型号 | 柱塞的种类 | 高度 | 动作力 | 接地端子 | |
|---------------------|-------|-------|-------|----------|----------|
| | | | | 无 | 有 |
| 柱塞型 (B3F-6000系列) | 平型 | 4.3mm | 0.98N | B3F-6000 | B3F-6100 |
| | | | 1.47N | B3F-6002 | B3F-6102 |
| | | 5.0mm | 0.98N | B3F-6020 | B3F-6120 |
| | | | 1.47N | B3F-6022 | B3F-6122 |
| | 凸型 | 7.3mm | 0.98N | B3F-6050 | B3F-6150 |
| | | | 1.47N | B3F-6052 | B3F-6152 |

注. 订货需1,000个的整数倍。注意不可以端子数发货。

■ 额定值/性能

| | |
|--------|--|
| 电气额定值 | DC5~24V 1~50mA 阻性负载 (B3F-G系列: DC5~24V 100μA~50mA) |
| 使用环境温度 | -25~+70℃ (无结冰) |
| 使用环境湿度 | 35~85%RH |
| 接点构成 | 1a常开接点 |
| 接触电阻 | 100mΩ以下 (初始值) (DC5V 1mA通电) (B3F-G系列: DC5V 100μA通电) |
| 绝缘电阻 | 100MΩ以上 (DC250V兆欧表) |
| 耐压 | AC500V 50/60Hz 1min |
| 外壳 | 5ms以下 |
| 振动 | 误动作 频率10~55Hz 双振幅1.5mm |
| 冲击 | 耐久 最大1,000m/s ² |
| | 误动作 最大100m/s ² |
| 寿命 | B3F-1000系列、B3F-3000系列、B3F-6000系列 100万次以上 (OF:0.98N型、B3F-1070在50万次以上) 30万次以上 (OF:1.47N型) 10万次以上 (OF:2.55N型) 5万次以上 (OF:4.9N型) B3F-4000系列 300万次以上 (OF:1.27N型) 100万次以上 (OF:2.55N型) B3F-5000系列:1000万次以上 B3F-G系列:30万次以上 |
| 质量 | 6mm方形: 约0.25g、12mm方形: 约0.85g (标准数值)、开孔形: 约0.25g |

■ 动作特性

| 类型 | B3F-1000、-3000、-6000系列 | | | | B3F-4000、-5000系列 | | B3F-G系列 |
|----------|---|----------------------------------|----------------------|-----------|--|------------|---|
| | 0.98N型 | 1.47N型 | 2.55N型 | 4.9N型 | 1.27N型 | 2.55N型 | 1.76N型 |
| 项目 | B3F-1□□0 B3F-3□□0 B3F-6□□0 | B3F-1□□2 B3F-3□□2 B3F-6□□2 | B3F-1□□5 B3F-3□□5 | B3F-10□□6 | B3F-4□□0 B3F-5□□0 | B3F-4□□5 | B3F-1□□2-G B3F-3□□2-G |
| 动作力 (OF) | 0.98±0.29N | 1.47±0.49N | 2.55±0.69N | 4.9±1.47N | 1.27±0.49N | 2.55±0.69N | 1.76±0.49N |
| 回复力 (RF) | 最小0.2N | 最小0.49N | 最小0.49N | 最小0.7N | 最小0.29N | 最小0.49N | 最小0.49N |
| 过行程 (PT) | 0.25 ^{+0.1} _{-0.1} mm | | | | 0.3 ^{+0.1} _{-0.1} mm | | 0.25 ^{+0.1} _{-0.1} mm |

■外形尺寸 (单位:mm)

6mm方形

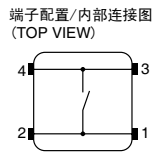
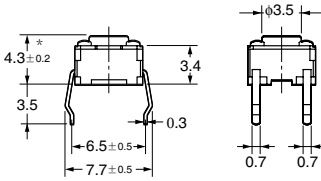
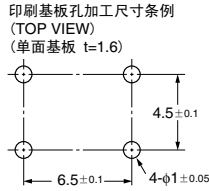
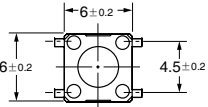
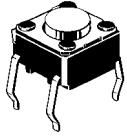
注: 正常状态下BOTTOM VIEW “OMRON” 的标识 (见右图), 端子型号如右图。
(横压型和径向型除外)



●标准型、平型 (无接地端子)

- B3F-1000 B3F-1002 B3F-1005 B3F-1006
B3F-1020* B3F-1022* B3F-1025* B3F-1026*
B3F-1002-G
B3F-1022-G*

| 型号 | CAD文件 |
|----------|--------|
| B3F-100□ | B3F_01 |
| B3F-102□ | B3F_02 |

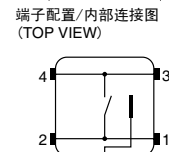
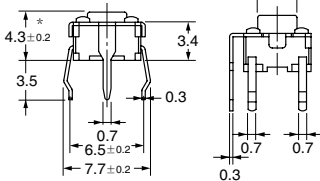
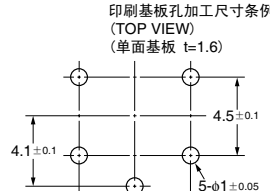
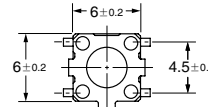
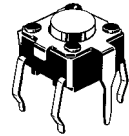


* B3F-1020、B3F-1022、B3F-1025、B3F-1026、B3F-1022-G高度在5±0.2mm

●标准型、平型 (有接地端子、间距6.5mm)

- B3F-1100 B3F-1102 B3F-1105
B3F-1120* B3F-1122* B3F-1125*
B3F-1102-G
B3F-1122-G*

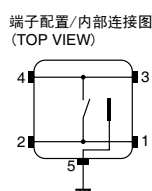
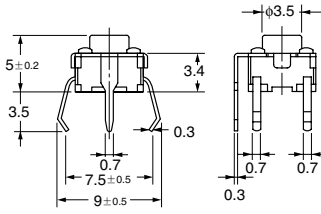
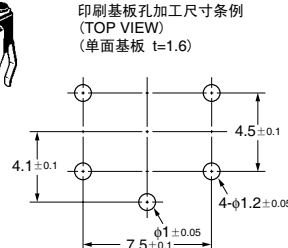
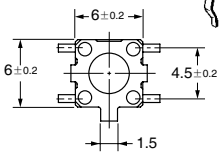
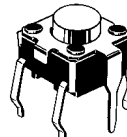
| 型号 | CAD文件 |
|----------|--------|
| B3F-110□ | B3F_04 |
| B3F-112□ | B3F_05 |



* B3F-1120、B3F-1122、B3F-1125、B3F-1122-G高度在5±0.2mm

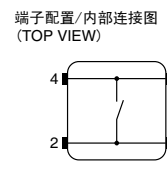
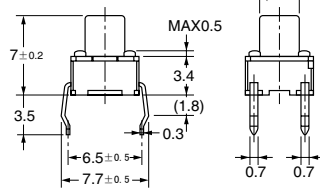
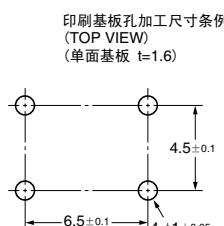
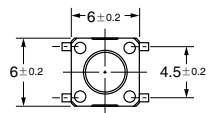
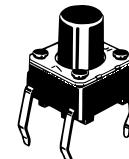
●标准型、平型 (有接地端子、间距7.5mm)

B3F-1110



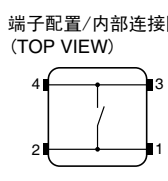
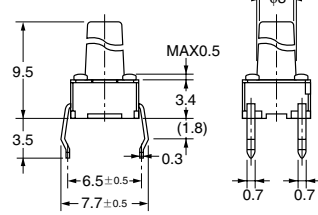
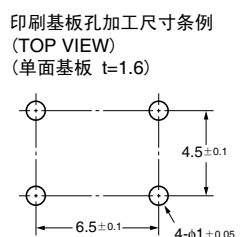
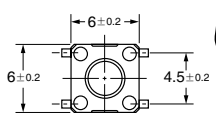
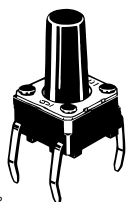
●标准型、平型 (无接地端子)

B3F-1060 B3F-1062 B3F-1062-G



●标准型、平型 (无接地端子)

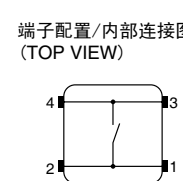
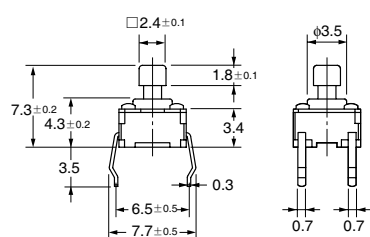
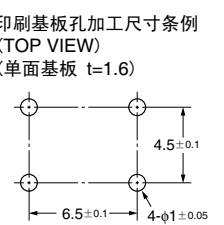
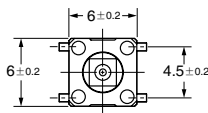
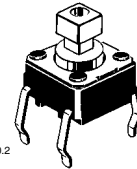
B3F-1070 B3F-1072-N B3F-1075 B3F-1072-G



●标准型、凸型 (无接地端子)

B3F-1050 B3F-1052
B3F-1055 B3F-1056
B3F-1052-G

| CAD文件 | B3F_03 |
|-------|--------|
|-------|--------|

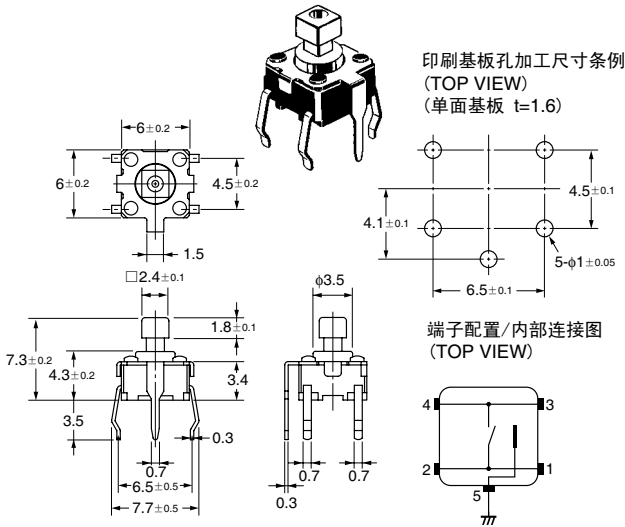


注: 上述外形尺寸图中, 未注公差为±0.4mm。开关本体的端子型号没有表示。

●标准型、凸型（有接地端子）

B3F-1150 B3F-1152 B3F-1155

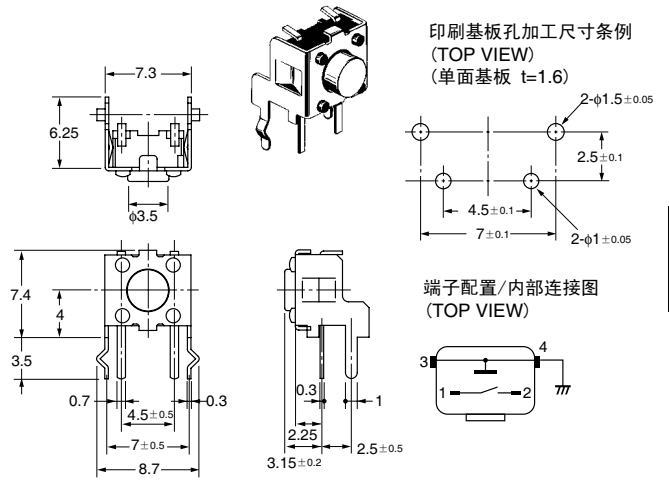
CAD文件 B3F_06



●立式型、平型

B3F-3100 B3F-3102 B3F-3105

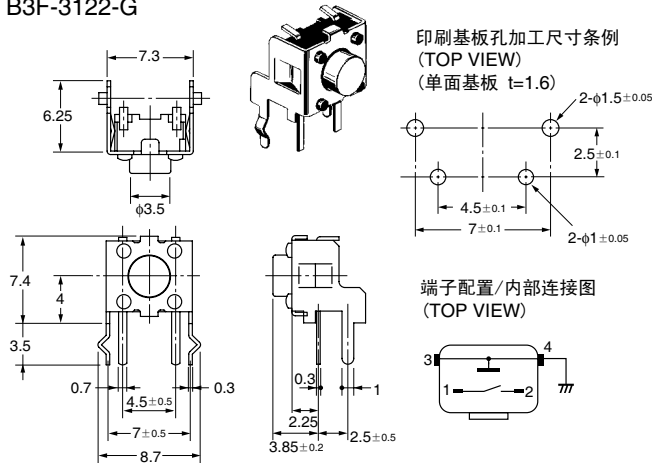
CAD文件 B3F_07



●立式型、平型（高度3.85m）

B3F-3120 B3F-3122 B3F-3125
B3F-3122-G

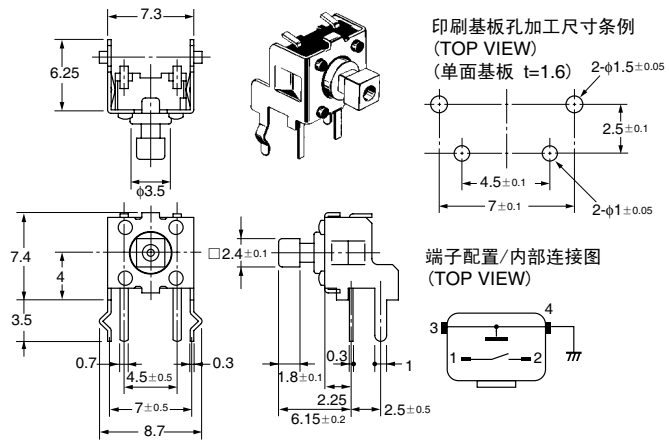
CAD文件 B3F_08



●立式型、凸型

B3F-3150 B3F-3152 B3F-3155

CAD文件 B3F_09



注：上述外形尺寸图中，未注公差为±0.4mm。开关本体的端子型号没有表示。

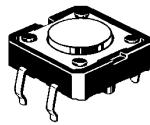
B
3
F

12mm方形

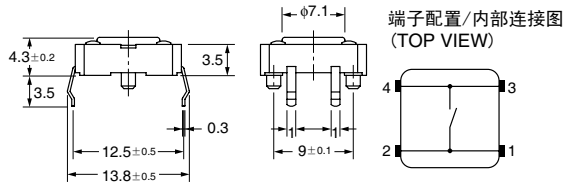
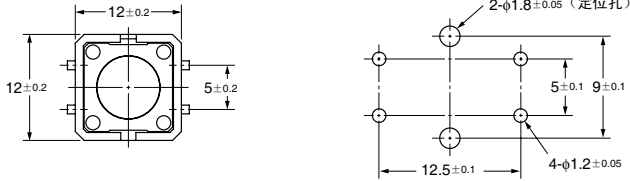
●标准型、长寿命型、高信赖型
平型（无接地端子）

B3F-4000 B3F-4005
B3F-5000 B3F-5001

CAD文件 B3F_14



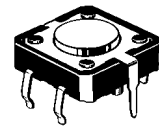
印刷基板孔加工尺寸条例
(TOP VIEW)
(单面基板 t=1.6)



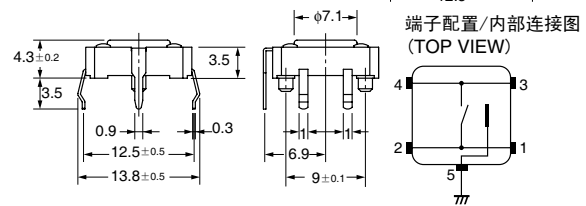
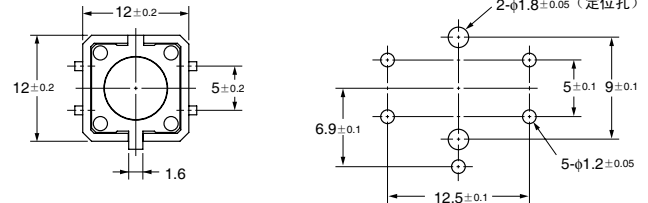
●标准型、长寿命型、高信赖型
平型（有接地端子）

B3F-4100 B3F-4105
B3F-5100 B3F-5101

型号 CAD文件
B3F-410□ B3F_11



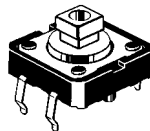
印刷基板孔加工尺寸条例
(TOP VIEW)
(单面基板 t=1.6)



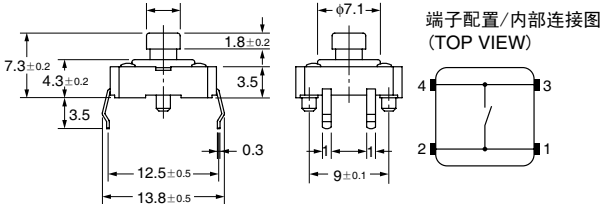
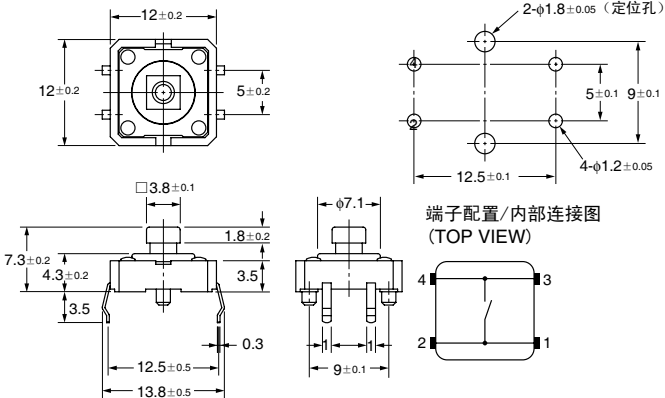
●标准型、长寿命型、高信赖型
凸型（无接地端子）

B3F-4050 B3F-4055
B3F-5050 B3F-5051

CAD文件 B3F_10



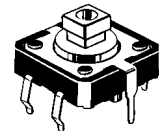
印刷基板孔加工尺寸条例
(TOP VIEW)
(单面基板 t=1.6)



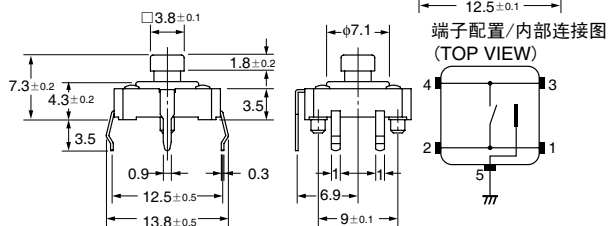
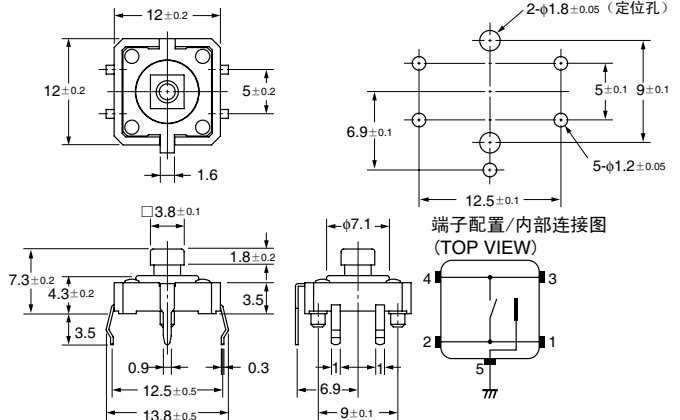
●标准型、长寿命型、高信赖型
凸型（有接地端子）

B3F-4150 B3F-4155
B3F-5150 B3F-5151

CAD文件 B3F_12



印刷基板孔加工尺寸条例
(TOP VIEW)
(单面基板 t=1.6)



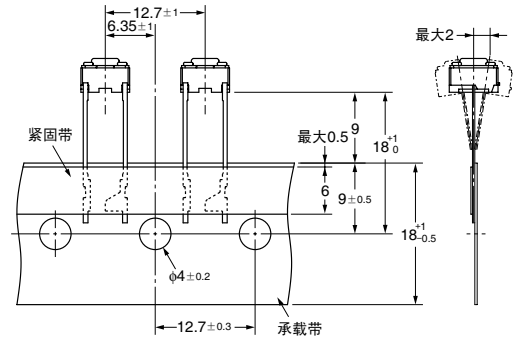
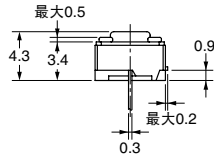
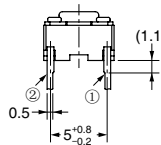
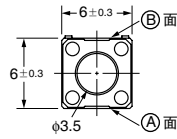
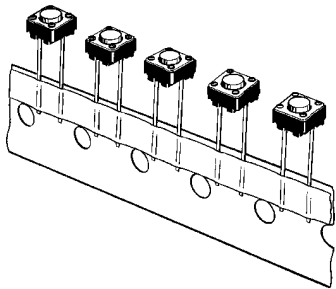
注. 上述外形尺寸图中, 未注公差为±0.4mm。

6mm方形柱塞型 (袋装规格)

注: 正常状态下BOTTOM VIEW “OMRON”的标识 (见右图), 端子型号如右图。

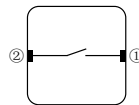
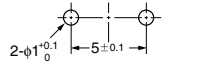


- 平型 (无接地端子)
- B3F-6000
- B3F-6002



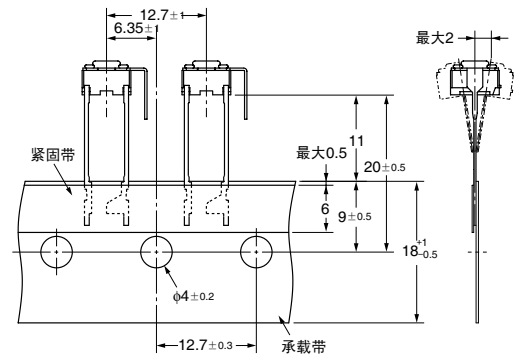
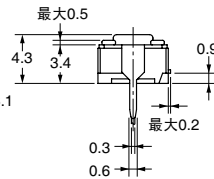
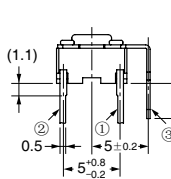
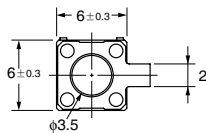
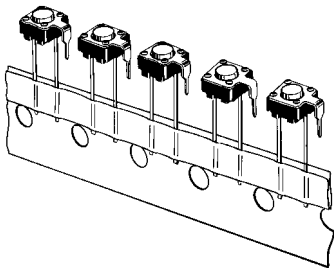
印刷基板孔加工尺寸条例 (TOP VIEW) (单面基板t=1.6)

端子配置/内部连接图 (TOP VIEW)



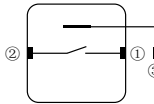
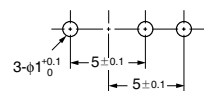
注: 带子的方向随机为A面或B面

- 平型 (有接地端子)
- B3F-6100
- B3F-6102

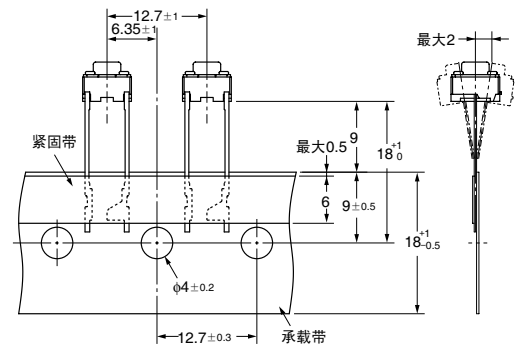
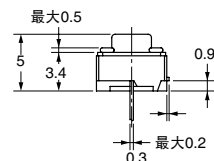
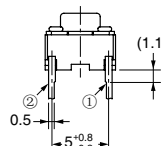
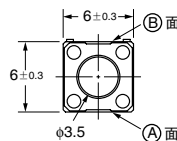
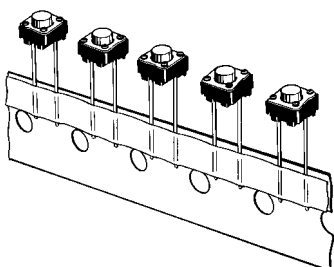


印刷基板孔加工尺寸条例 (TOP VIEW) (单面基板t=1.6)

端子配置/内部连接图 (TOP VIEW)

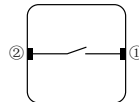
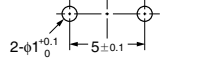


- 平型 (无接地端子)
- B3F-6020
- B3F-6022



印刷基板孔加工尺寸条例 (TOP VIEW) (单面基板t=1.6)

端子配置/内部连接图 (TOP VIEW)

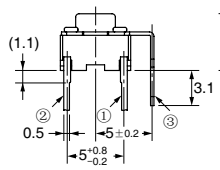
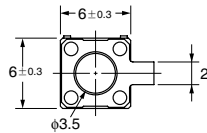
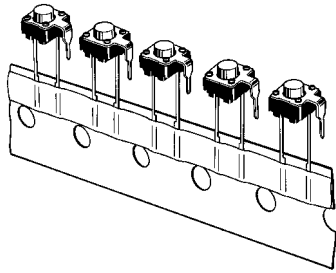


注: 带子的方向随机为A面或B面

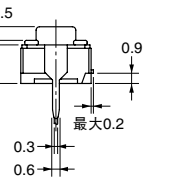
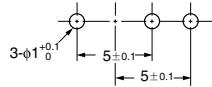
注: 上述的各种机型外型尺寸, 没有指定部分的公差为±0.4mm。开关本体的端子型号没有表示。

● 平型 (有接地端子)

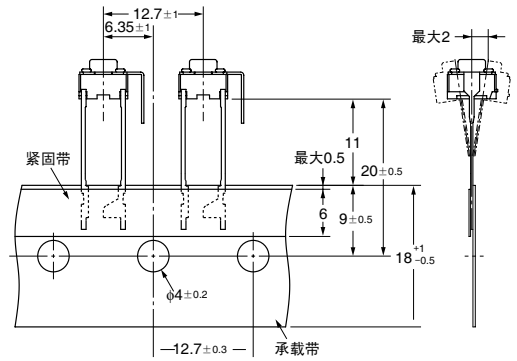
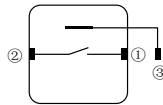
B3F-6120
B3F-6122



印刷基板加工尺寸
(TOP VIEW)
(单面基板 t=1.6)

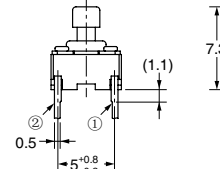
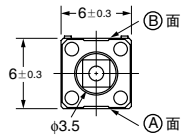
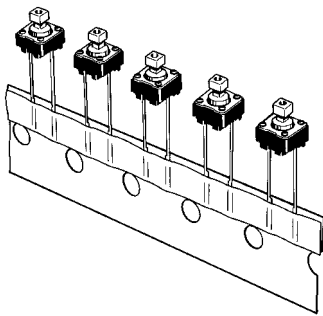


端子配置/内部接线图
(TOP VIEW)

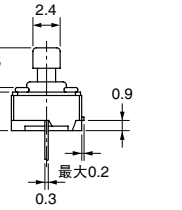
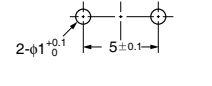


● 凸型 (无接地端子)

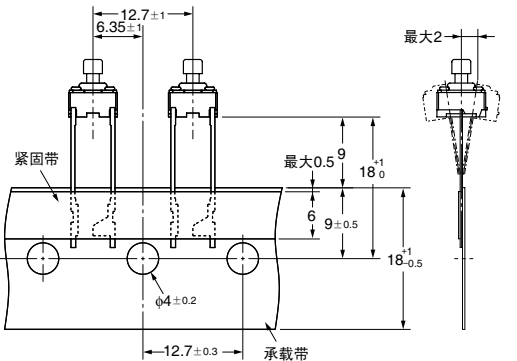
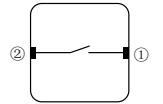
B3F-6050
B3F-6052



印刷基板加工尺寸
(TOP VIEW)
(单面基板 t=1.6)



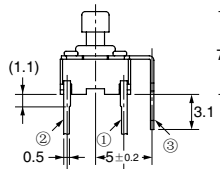
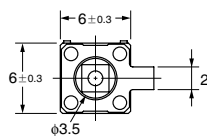
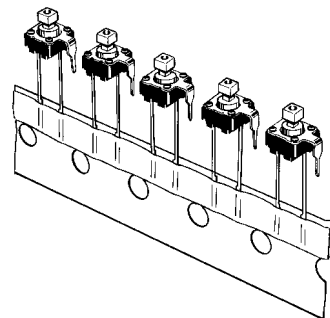
端子配置/内部接线图
(TOP VIEW)



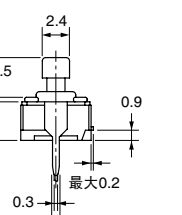
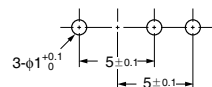
注. 带子的方向随机为(A)面或(B)面

● 凸型 (有接地端子)

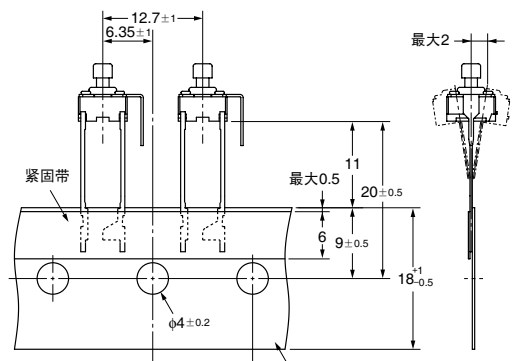
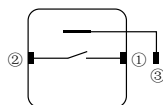
B3F-6150
B3F-6152



印刷基板加工尺寸
(TOP VIEW)
(单面基板 t=1.6)



端子配置/内部接线图
(TOP VIEW)



注. 上述的各种机型外型尺寸, 没有指定部分的公差为±0.4mm. 开关本体的端子型号没有表示.

■ 键顶

凸柱塞型, 备有专用的键顶及B32型系列详细内容请参见有关章节.

■ 请正确使用

★「共通注意事项」请参考相关页.